

Ceramica romana tardo antica dal villaggio romano Virovitica Kiškorija Jug (Pannonia Superior) dalle unità stratigrafiche datate col 14C

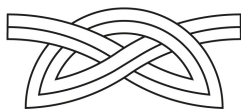
Jelinčić, Kristina

Conference presentation / Izlaganje na skupu

Permanent link / Trajna poveznica: <https://um.nsk.hr/um:nbn:hr:291:419661>

Rights / Prava: [Attribution-NoDerivatives 4.0 International](#)/[Imenovanje-Bez prerada 4.0 međunarodna](#)

Download date / Datum preuzimanja: **2025-02-05**



INSTITUT ZA
ARHEOLOGIJU

Repository / Repozitorij:

[RIARH - Repository of the Institute of archaeology](#)

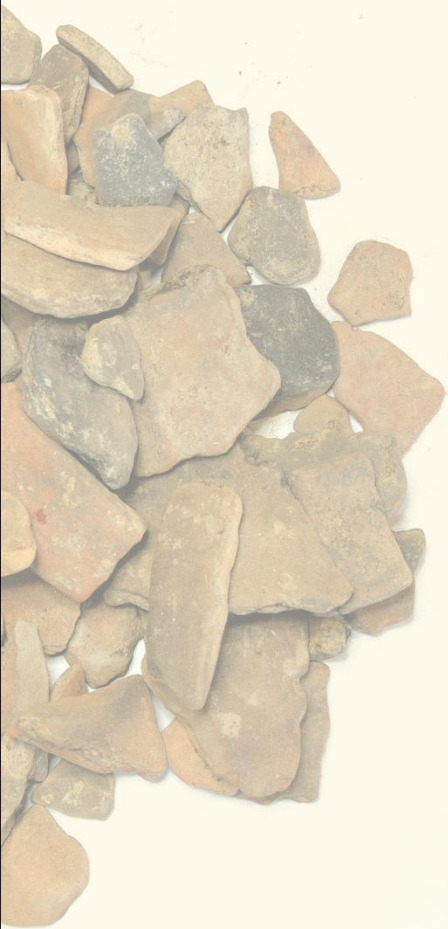
Institute of archaeology
Zagreb - Croatia



*Late Roman Pottery from
Roman Village Virovitica Kiškorija jug
(Upper Pannonia)
Found in 14C Dated Units*

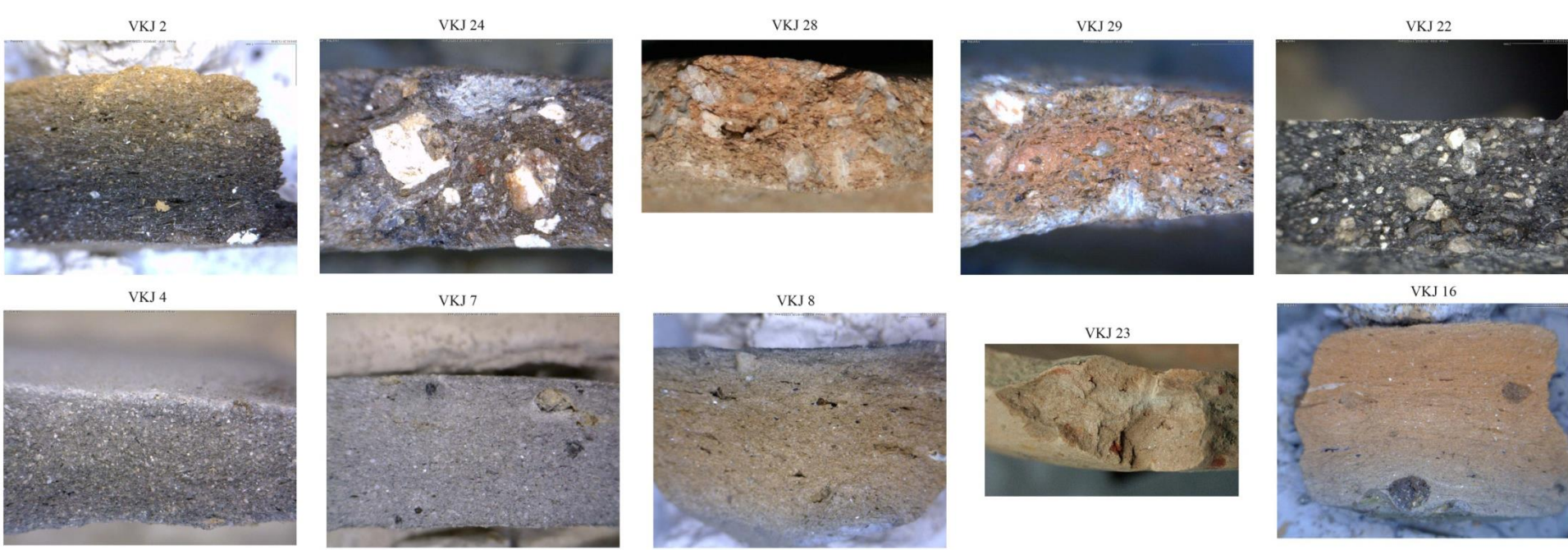
*Ceramica romana tardoantica da villaggio romano
Virovitica Kiškorija jug
(Pannonia Superior)
dalle unità stratigrafiche datate col 14C*

dr. sc. Kristina Jelinčić



- Roman village from II-V century, with cottages, pithouses, fences, wells, pits, batch ovens, trenches...
- Situated in Upper Pannonia, south of the river Drava, north of the road *Poetovio – Mursa*
- Villaggio romano dal II-V secolo con capanne, recinti, pozzi, fosse, fornaci in argilla per pane...
- Si trova in Pannonia Superior, a sud di fiume Drava, a nord di strada *Poetovio – Mursa*





29 fabric groups of ware – 29 impasti della ceramica

	century secolo									
VKJ 2	II-V	x	x	x	x	x			x	x
VKJ 24,28,29	III-IV			x						x
VKJ 22	V			x					x	
VKJ 4,7,8	II-IV			x	x		x		x	
VKJ 23,16	III-V	x	x				x	x	x	



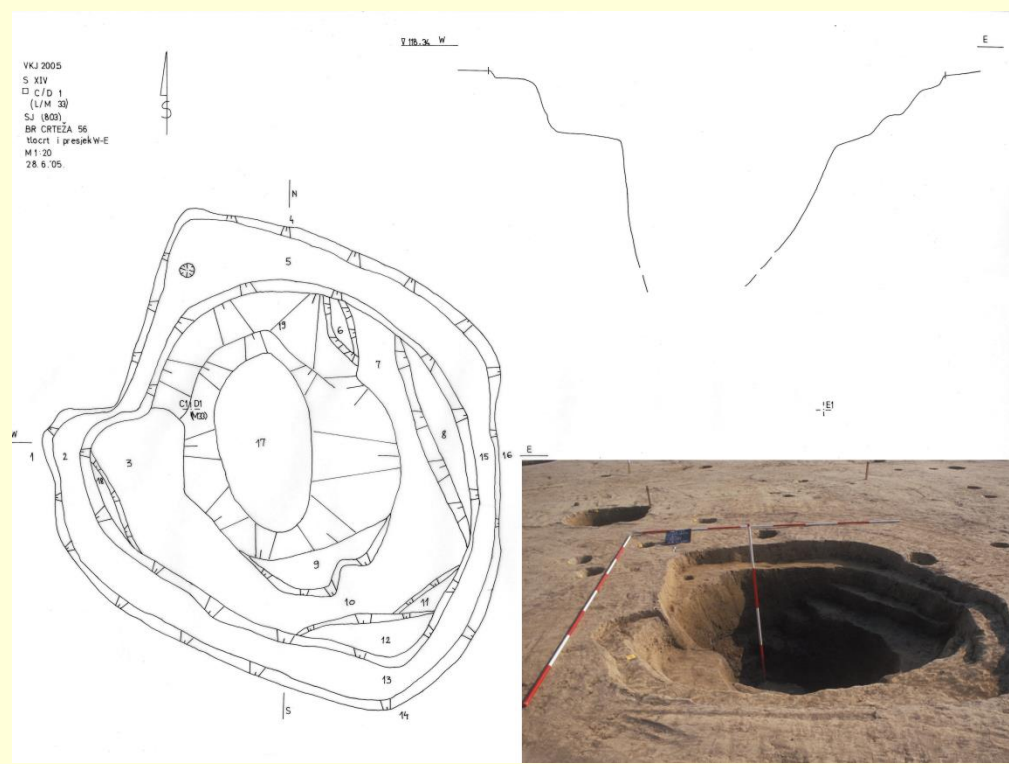


- Coarse pottery (fabric VKJ 2)
- Local production (micro-region)
- Potter's wheel used rarely
- Visible marks from utensils, fingers
- Analogies in type present in Pannonia Superior
- In micro-region: analogies in type, fabric, technology

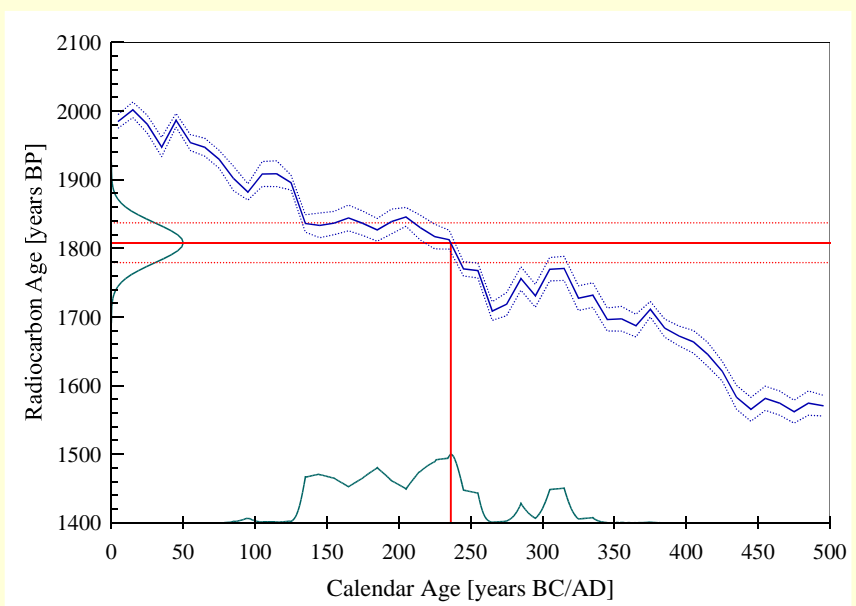


- Ceramica grezza (impasto VKJ 2)
- Produzione locale (entro microregione)
- Il tornio usato raramente
- Visibile tracce degli utensili, dita...
- Confronti dei tipi sono presenti in Pannonia Superiore
- Nella microregione: i confronti si trovano in tipologia, impasti e tecnologia





- Roman well
- Roman glass bracelets and glazed ware → 1st half of 3rd century
- Pozzo romano
- Bracioletti in vetro e ceramica invetriata → prima metà del III sec.



Radiocarbon Age: BP 1808 ± 29
 Calibrated Age: cal AD 236
 One Sigma Range: cal AD 134 - 161 (Probability 17.8 %)
 (Probability 68,3 %) 169 - 198 (Probability 20.5 %)
 208 - 244 (Probability 30.1 %)
 Two Sigma Range: cal AD 130 - 258 (Probability 84.9 %)
 (Probability 95,4 %) 282 - 290 (Probability 1.9 %)
 298 - 321 (Probability 8.6 %)

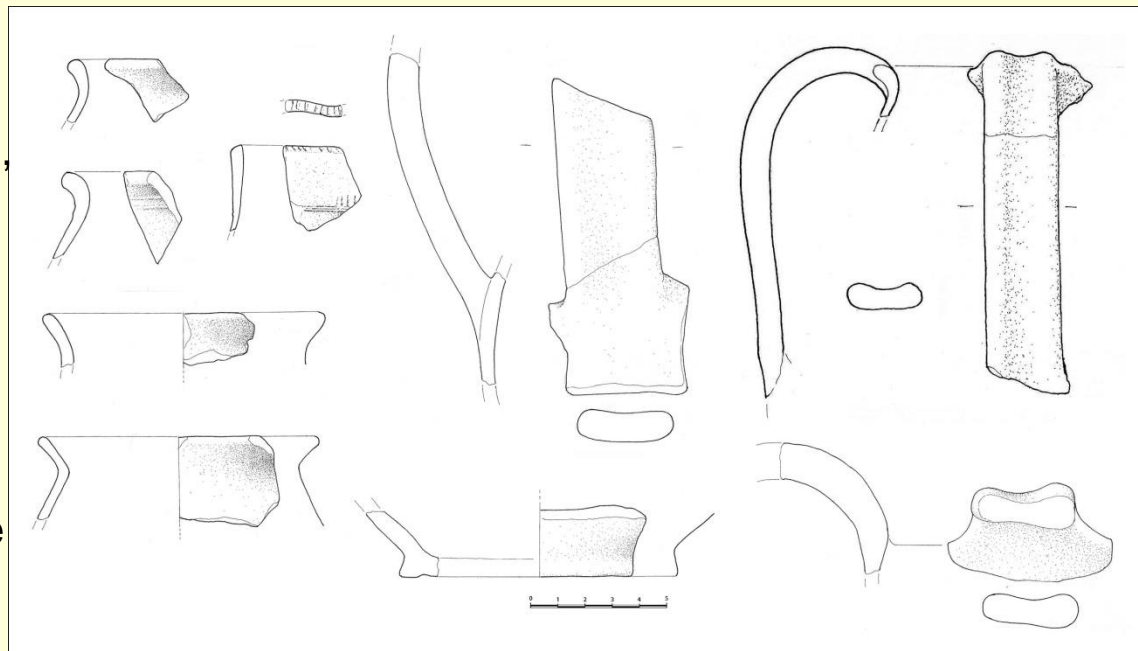


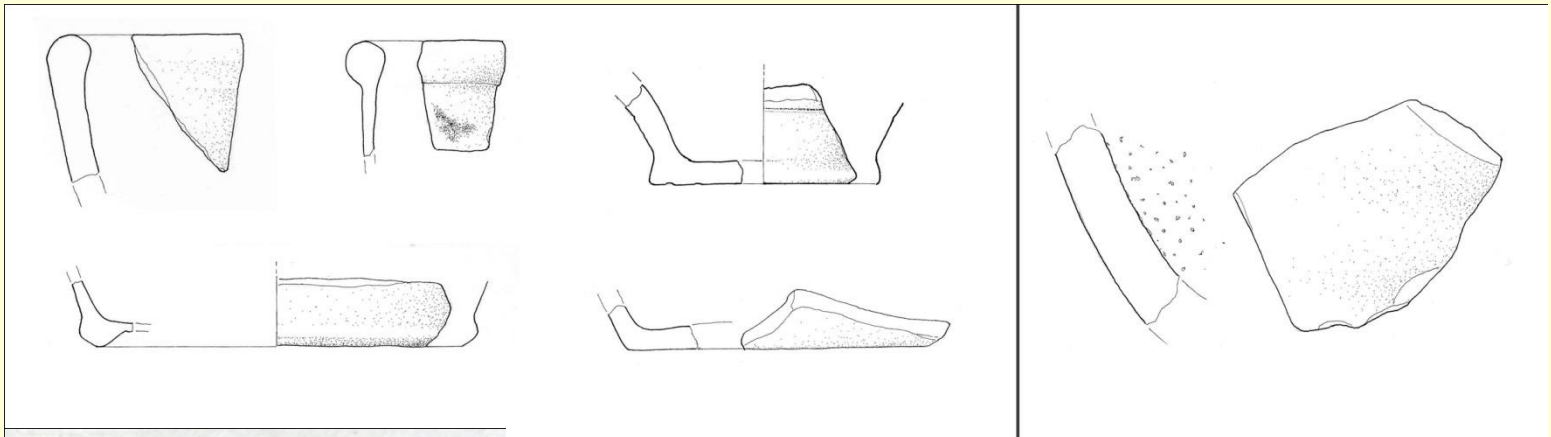


- Terra sigillata
- Dragendorf 32
- production/provenienza (?)
- Kitchen coarse ware / Ceramica grezza
- Jar/Olla 4 → II-IV century / secolo
- Big flagons with two handles / brocche grandi a due anse



- Gray ware - prehistoric tradition in type and technology, several fabrics, without slip, rarely decorated, jars and flagons
- Ceramica grigga - tradizioni preistoriche in tipologia e tecnologia, impasti diversi, senza vernice, decorata raramente, olle e brocche





- Fineware, orange slip
- Ceramica depurata, vernice di colore arancio

- Glazed mortaria
- Mortai invetriati

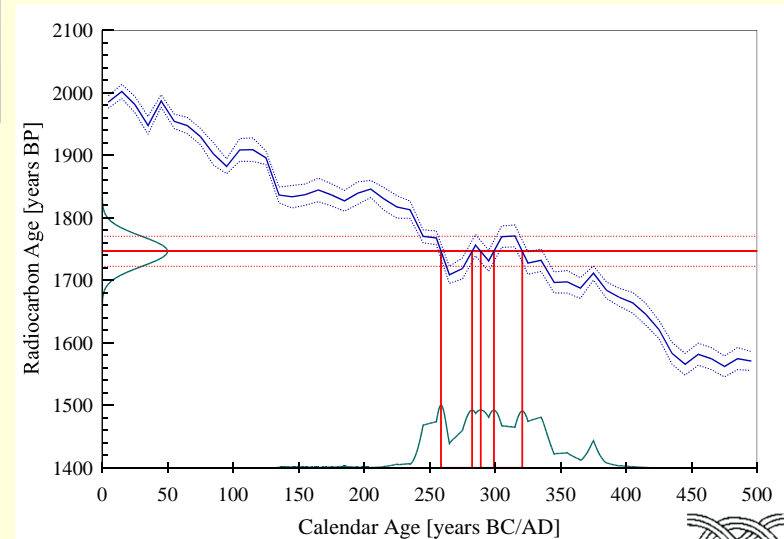




- 14C analysis → III/IV century
- Pithouse; glass, metal finds, animal bones, iron slag, cereals, blackberries, pottery
- Analisi del 14C → III/IV
- Capanna; artefatti in metallo e vetro, ossa degli animali, scorie di ferro, cereali, more, ceramica

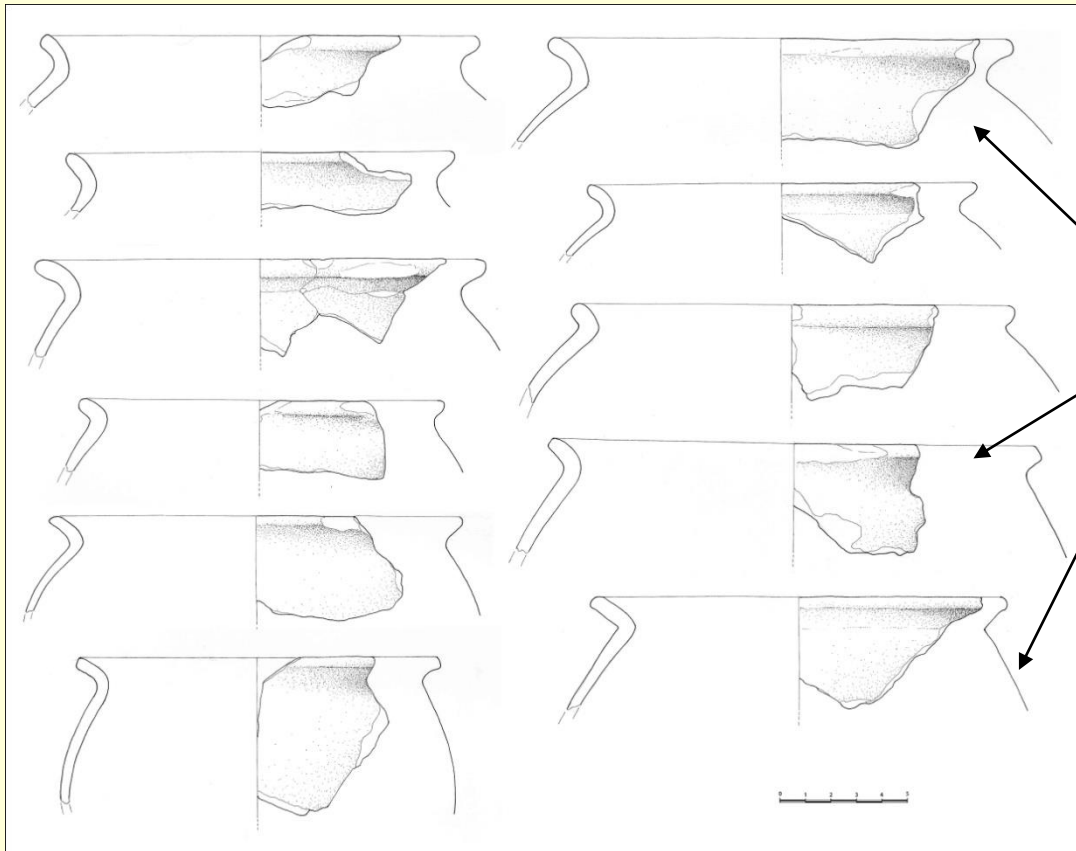


Radiocarbon Age:	BP	1746 ± 24
Calibrated Ages:	cal AD	259, 282, 289, 299, 321
One Sigma Range:	cal AD	245 - 263 (Probability 16.2 %)
(Probability 68,3 %)		276 - 308 (Probability 31.8 %)
		315 - 338 (Probability 20.3 %)
Two Sigma Range:	cal AD	239 - 361 (Probability 90.6 %)
(Probability 95,4 %)		368 - 381 (Probability 4.8 %)



- Kitchen coarse ware, local production
- Different fabrics
- Ceramica grezza di produzione locale
- Impasti diversi

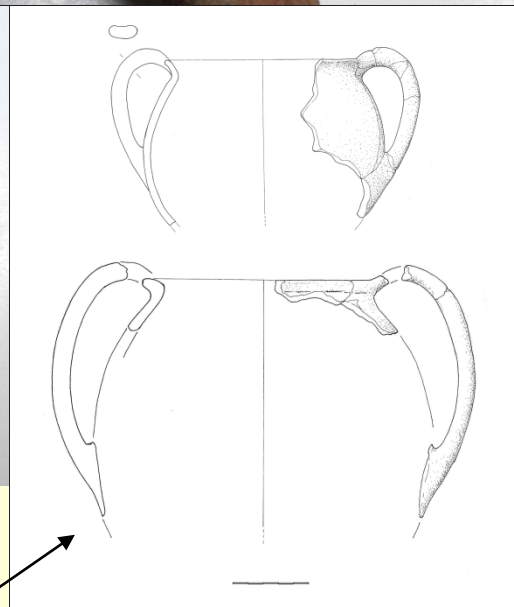
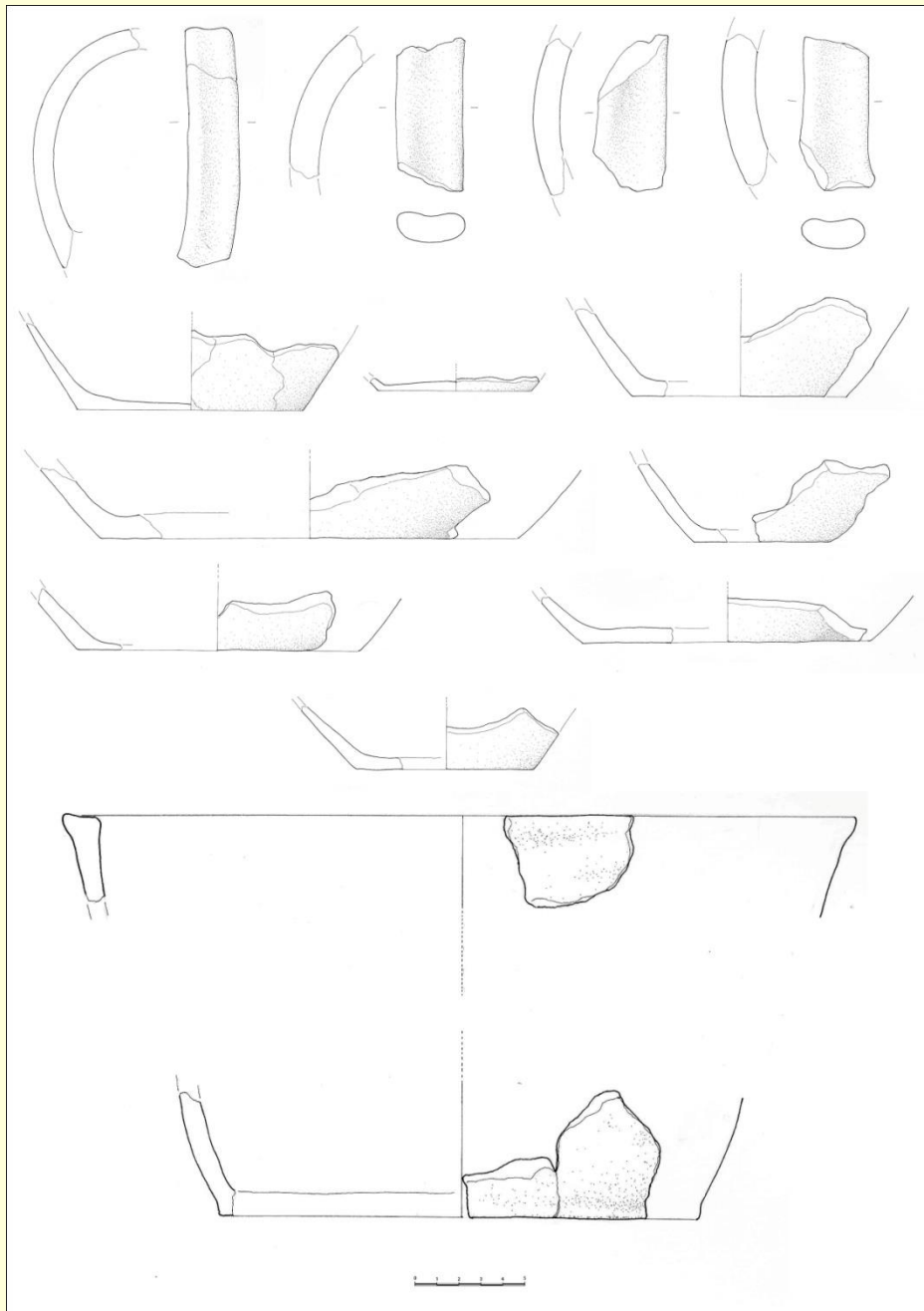




- 8 types of jars on VKJ site/
8 tipi di olle a VKJ

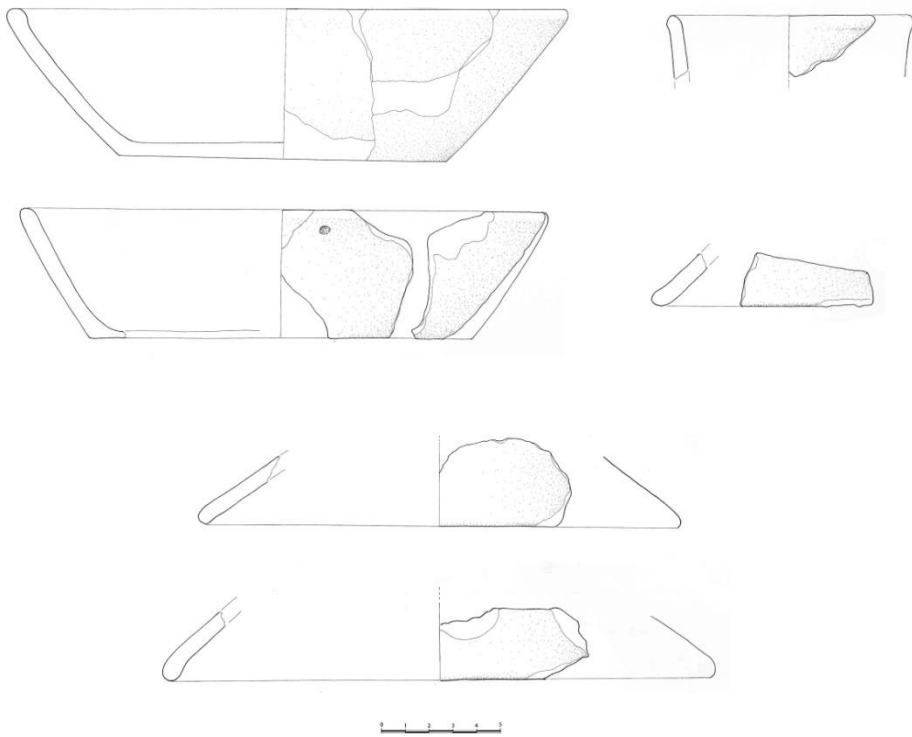
- Jar/olla 2 I-IV
- Jar/olla 3 II-IV
- Jar/olla 4 II-IV
- Fabric/impasto VKJ 2





- Jar/olla 5
- III-IV century/secolo, fabric/impasto VKJ 2





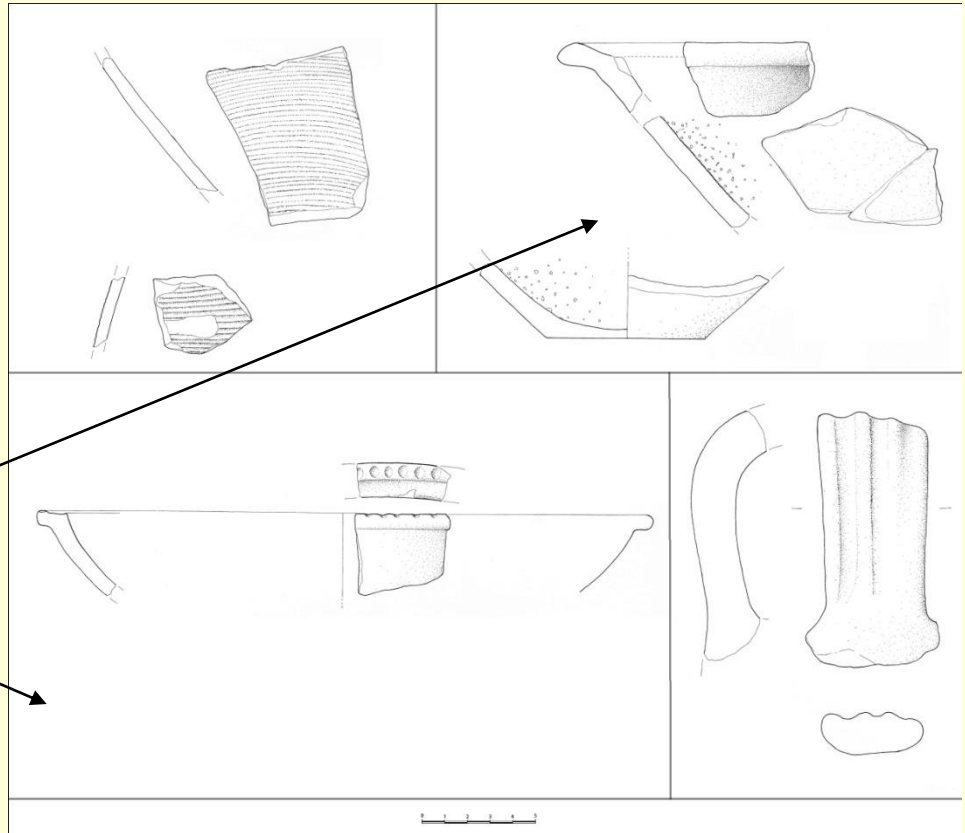
- Plates and lids – fabric VKJ 2
- Plates with slip on inner side
- Simple and practical forms

- Piatti e coperchi – impasto VKJ 2
- Piatti con vernice sulla parte inferiore
- Forme semplici e funzionali





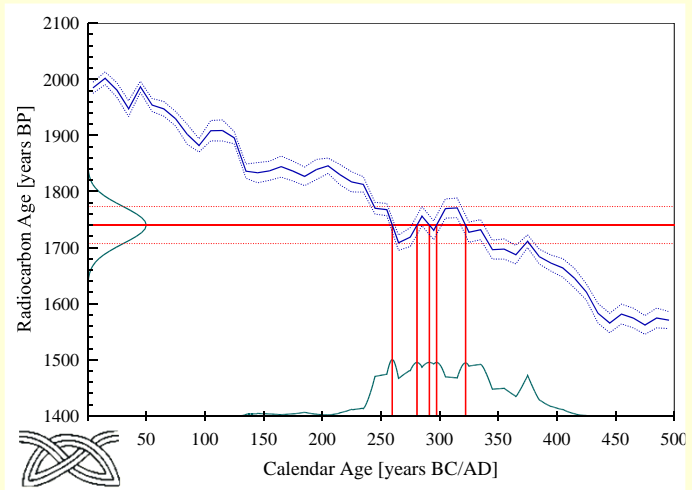
- Gray ware
Ceramica grigia
- Glazed ware – bowl and mortaria
Ceramica invetriata – terrina e mortai



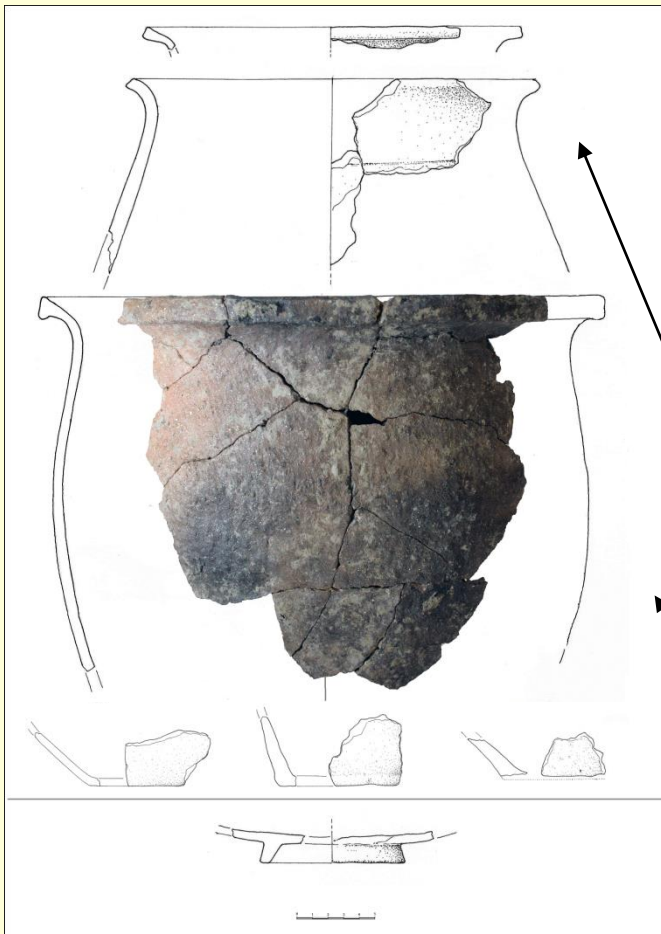


- Pit ?
- Kitchen coarse ware and terra sigillata
- Burned soil and charcoal bellow pottery
- III/IV century

- Fossa ?
- Ceramica grezza e terra sigillata
- Sotto la ceramica c'era terra bruciata e carbone
- III/IV secolo



Radiocarbon Age: BP 1740 ± 33
 Calibrated Ages: cal AD 260, 281, 291, 297, 322
 One Sigma Range: cal AD 245 - 265 (Probability 14.3 %)
 (Probability 68,3 %) 266 - 312 (Probability 33.5 %)
 315 - 341 (Probability 19.8 %)
 374 - 376 (Probability 0.7 %)
 Two Sigma Range: cal AD 231 - 402 (Probability 95.4 %)



- Kitchen coarse ware made without wheel with big inclusions of quartz and mica
Ceramica grezza prodotta senza tornio, con inclusioni grandi di quarzo e mica
- Jar/olla 8 III-V
- Jar/olla 6 III-IV



- Terra sigillata – base with foot / fondo con piede





- 1st half of V century
- Pithouse or working area with axes, nails, knives, small bronze bell, Crossbow brooch fragment (knob), ceramic weights, cereals, glazed and coarse ware

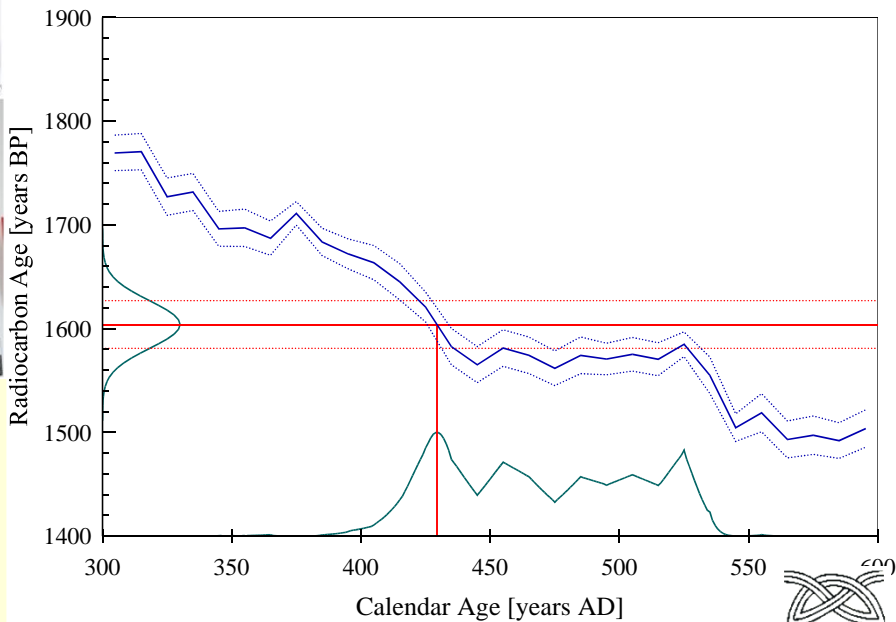
- Prima metà del V sec.
- Capanna o zona di lavoro con asce, chiodi, coltelli, campana in bronzo, frammento (cipolla) di Crossbow spilla, pesi in argilla, cereali, ceramica invetriata e grezza

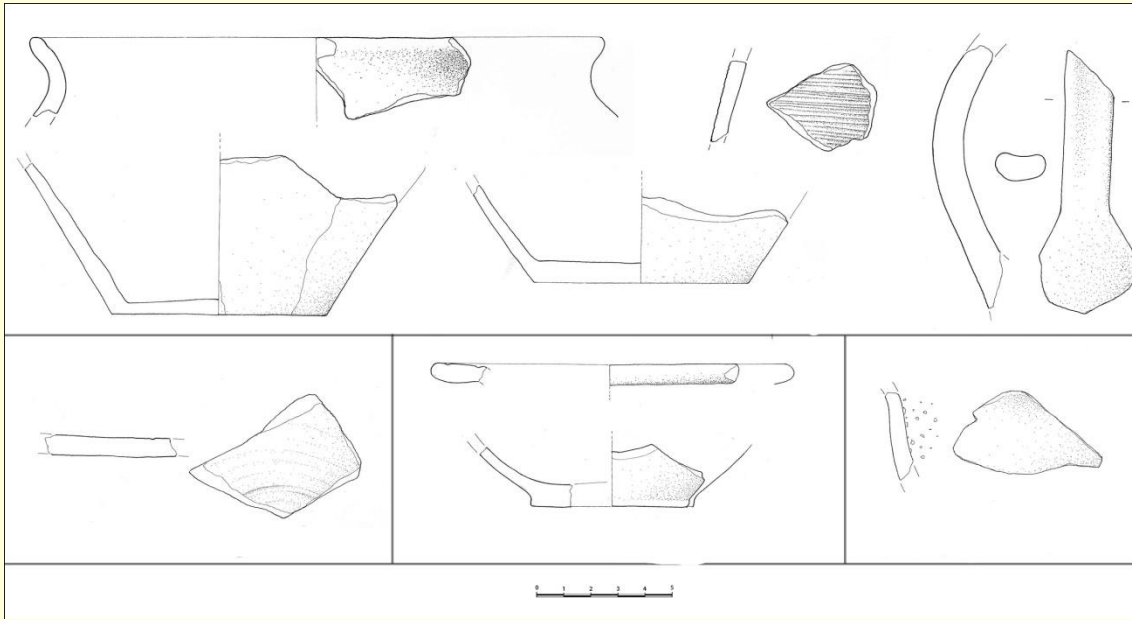


Calibrated Age:
One Sigma Range:
(Probability 68,3 %)

cal AD 429
cal AD 419 - 441 (Probability 24.6 %)
449 - 467 (Probability 14.3 %)
483 - 492 (Probability 6.8 %)
498 - 512 (Probability 10.9 %)
516 - 529 (Probability 11.6 %)
cal AD 412 - 534 (Probability 95.4 %)

Two Sigma Range:





- Kitchen coarse ware (fabric VKJ 2→II-V century)
- Fineware
- Glazed ware: small bowls and mortaria
- Ceramica grezza (impasti VKJ→II-V sec.)
- Ceramica depurata
- Ceramica invetriata: piccole ciottole e mortai





Thank you for your attention
Grazie per la vostra attenzione

