

# Ceramica romana tardo antica dal villaggio romano Virovitica Kiškorija Jug (Pannonia Superior) dalle unità stratigrafiche datate col 14C

---

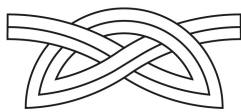
**Jelinčić, Kristina**

**Conference presentation / Izlaganje na skupu**

*Permanent link / Trajna poveznica:* <https://um.nsk.hr/um:nbn:hr:291:419661>

*Rights / Prava:* [Attribution-NoDerivatives 4.0 International](#)/[Imenovanje-Bez prerada 4.0 međunarodna](#)

*Download date / Datum preuzimanja:* **2024-12-21**



INSTITUT ZA  
ARHEOLOGIJU

*Repository / Repozitorij:*

[RIARH - Repository of the Institute of archaeology](#)

Institute of archaeology  
Zagreb - Croatia



*Late Roman Pottery from  
Roman Village Virovitica Kiškorija jug  
(Upper Pannonia)  
Found in 14C Dated Units*

*Ceramica romana tardoantica da villaggio romano  
Virovitica Kiškorija jug  
(Pannonia Superior)  
dalle unità stratigrafiche datate col 14C*

dr. sc. Kristina Jelinčić

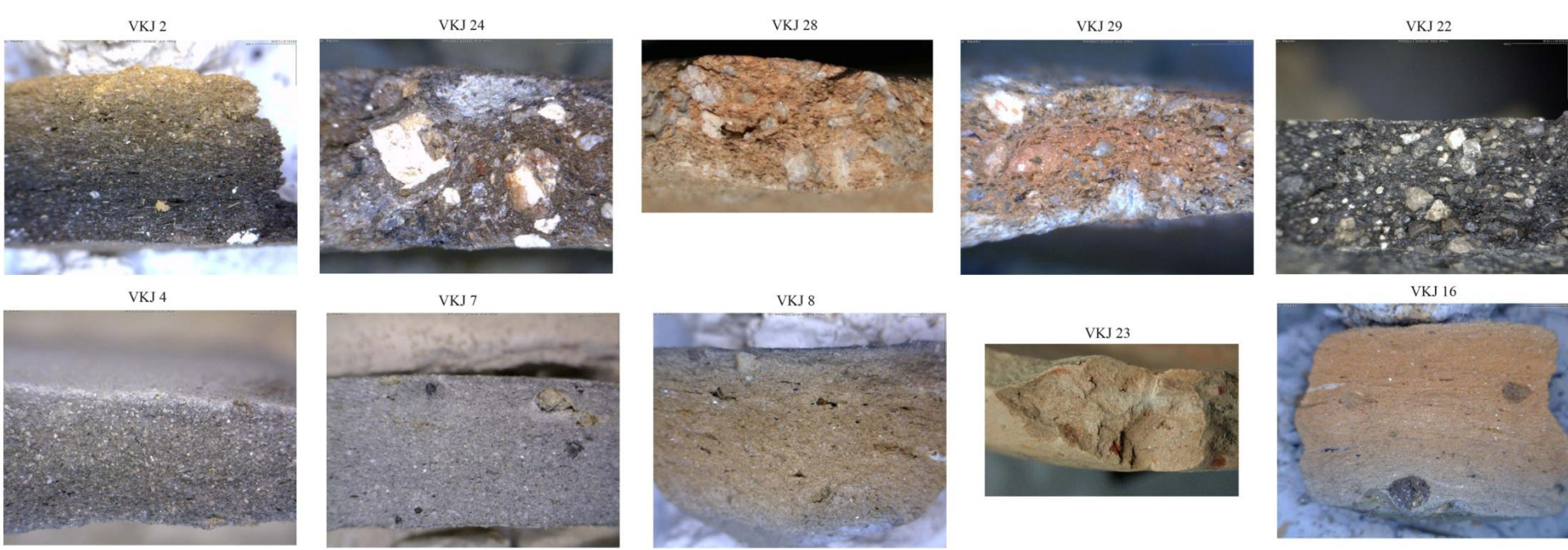




- Roman village from II-V century, with cottages, pithouses, fences, wells, pits, batch ovens, trenches...
- Situated in Upper Pannonia, south of the river Drava, north of the road *Poetovio – Mursa*
- Villaggio romano dal II-V secolo con capanne, recinti, pozzi, fosse, fornaci in argilla per pane...
- Si trova in Pannonia Superior, a sud di fiume Drava, a nord di strada *Poetovio – Mursa*







**29 fabric groups of ware – 29 impasti della ceramica**

	century secolo												
VKJ 2	II-V	x	x	x	x	x	x	x	x	x	x	x	x
VKJ 24,28,29	III-IV			x									x
VKJ 22	V			x								x	
VKJ 4,7,8	II-IV			x	x				x			x	
VKJ 23,16	III-V	x	x						x	x		x	





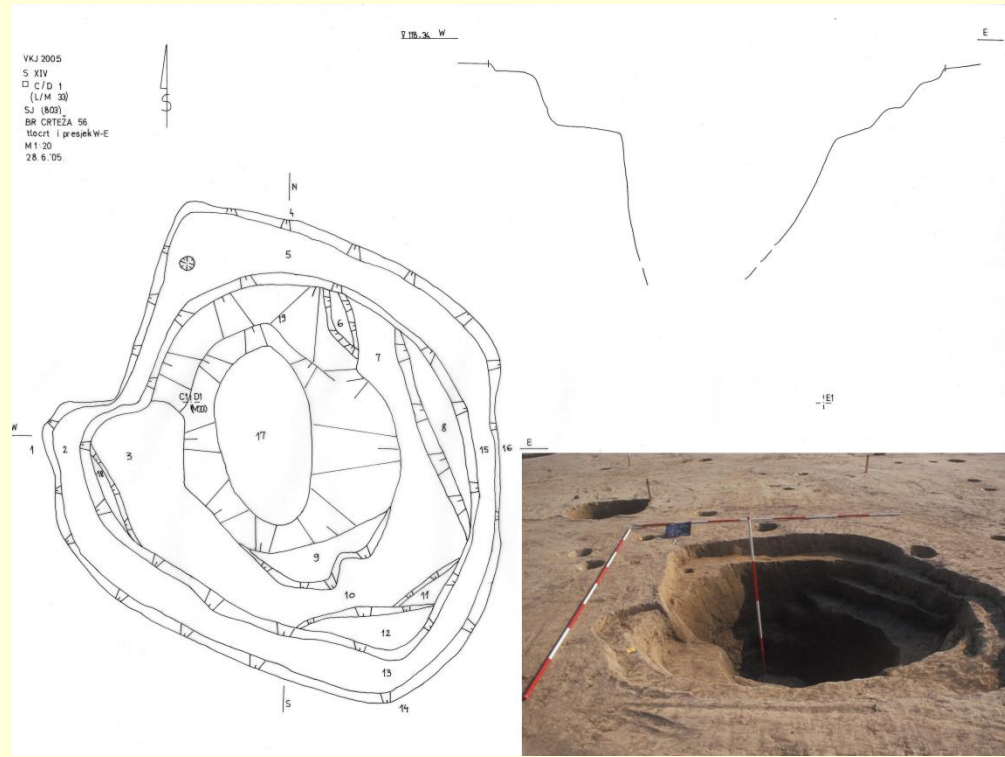
- Coarse pottery (fabric VKJ 2)
- Local production (micro-region)
- Potter's wheel used rarely
- Visible marks from utensils, fingers
- Analogies in type present in Pannonia Superior
- In micro-region: analogies in type, fabric, technology



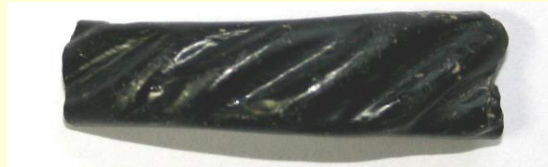
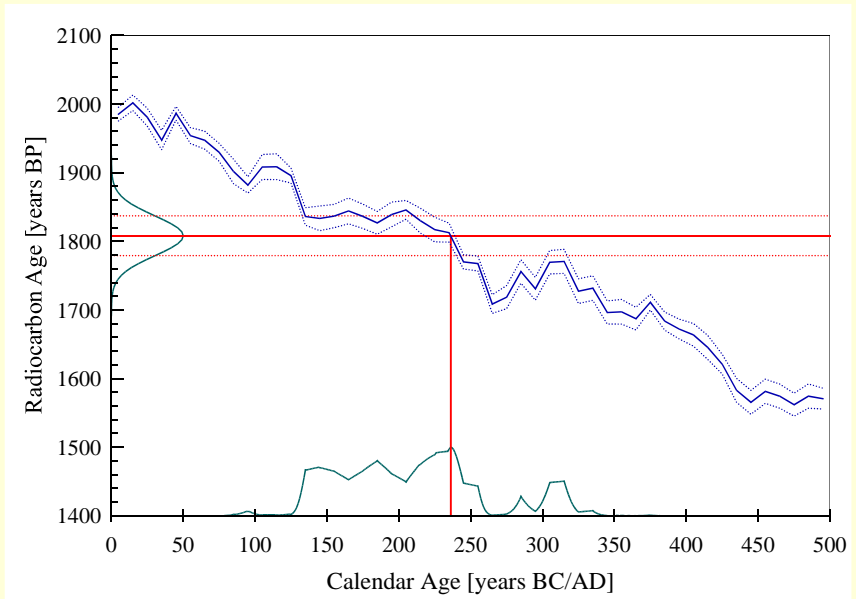
- Ceramica grezza (impasto VKJ 2)
- Produzione locale (entro microregione)
- Il tornio usato raramente
- Visibile tracce degli utensili, dita...
- Confronti dei tipi sono presenti in Pannonia Superiore
- Nella microregione: i confronti si trovano in tipologia, impasti e tecnologia







- Roman well
- Roman glass bracelets and glazed ware → 1st half of 3rd century
- Pozzo romano
- Bracioletti in vetro e ceramica invetriata → prima metà del III sec.



Radiocarbon Age: BP 1808 ± 29  
 Calibrated Age: cal AD 236  
 One Sigma Range: cal AD 134 - 161 (Probability 17.8 %)  
 (Probability 68,3 %) 169 - 198 (Probability 20.5 %)  
 208 - 244 (Probability 30.1 %)  
 Two Sigma Range: cal AD 130 - 258 (Probability 84.9 %)  
 (Probability 95,4 %) 282 - 290 (Probability 1.9 %)  
 298 - 321 (Probability 8.6 %)



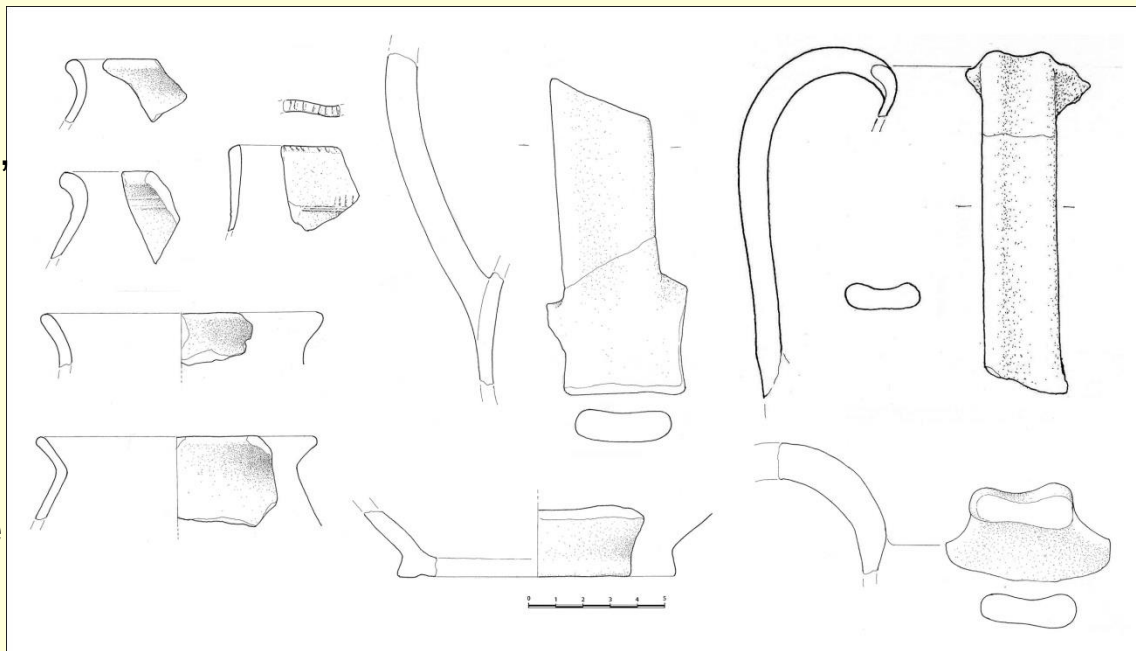


- Terra sigillata
- Dragendorf 32
- production/provenienza (?)
  
- Kitchen coarse ware / Ceramica grezza
- Jar/Olla 4 → II-IV century / secolo
- Big flagons with two handles / brocche grandi a due anse

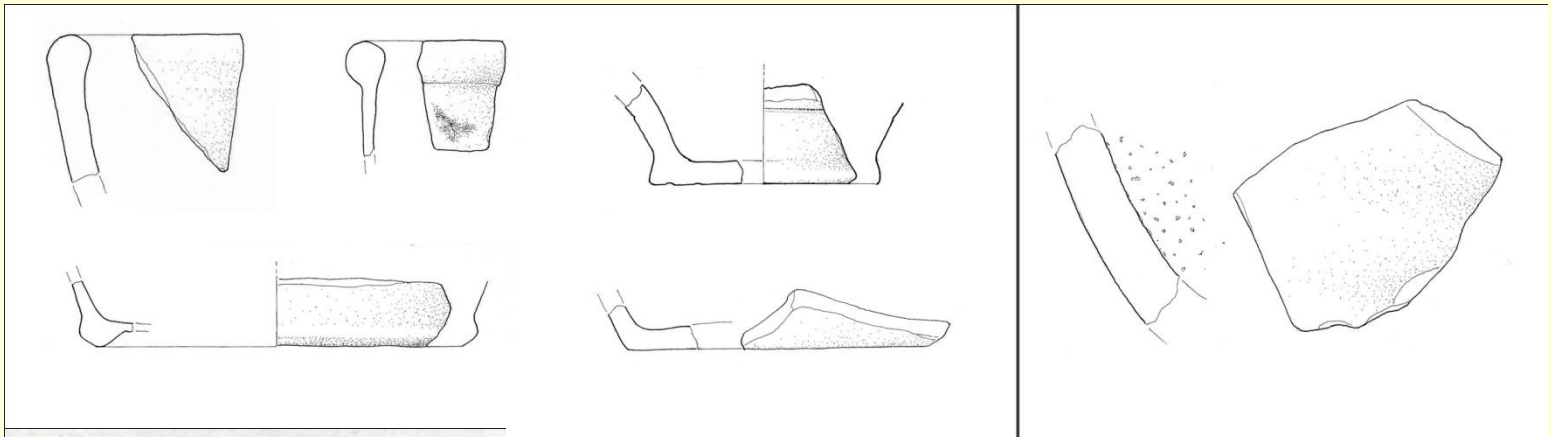




- Gray ware - prehistoric tradition in type and technology, several fabrics, without slip, rarely decorated, jars and flagons
- Ceramica grigga - tradizioni preistoriche in tipologia e tecnologia, impasti diversi, senza vernice, decorata raramente, olle e brocche







- Fineware, orange slip
- Ceramica depurata, vernice di colore arancio

- Glazed mortaria
- Mortai invetriati

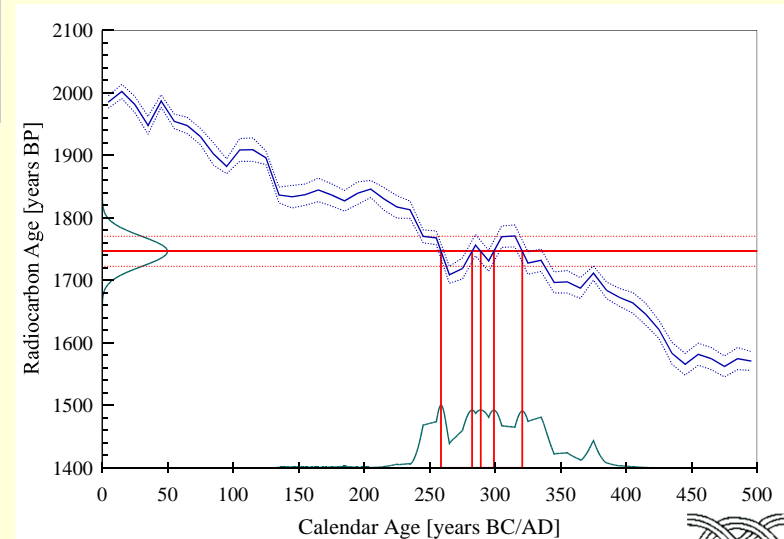




- 14C analysis → III/IV century
- Pithouse; glass, metal finds, animal bones, iron slag, cereals, blackberries, pottery
- Analisi del 14C → III/IV
- Capanna; artefatti in metallo e vetro, ossa degli animali, scorie di ferro, cereali, more, ceramica



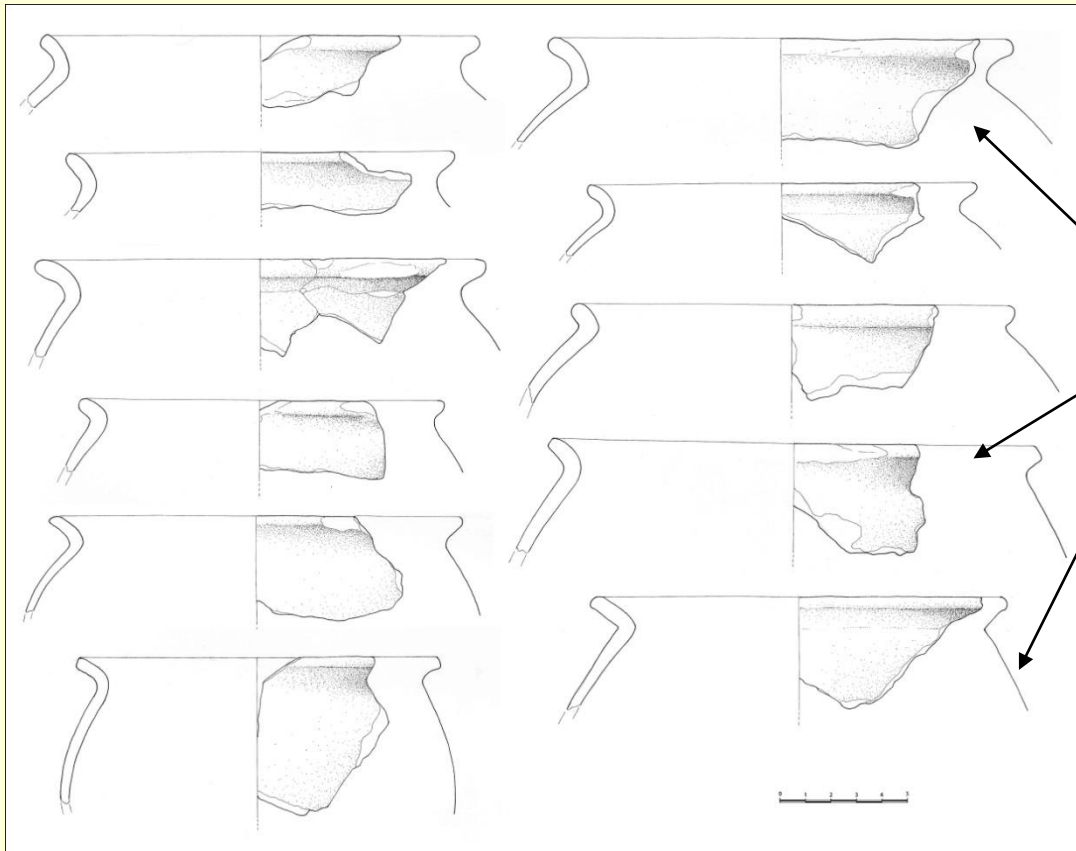
Radiocarbon Age:	BP	1746 ± 24
Calibrated Ages:	cal AD	259, 282, 289, 299, 321
One Sigma Range:	cal AD	245 - 263 (Probability 16.2 %)
(Probability 68,3 %)		276 - 308 (Probability 31.8 %)
		315 - 338 (Probability 20.3 %)
Two Sigma Range:	cal AD	239 - 361 (Probability 90.6 %)
(Probability 95,4 %)		368 - 381 (Probability 4.8 %)





- Kitchen coarse ware, local production
- Different fabrics
- Ceramica grezza di produzione locale
- Impasti diversi



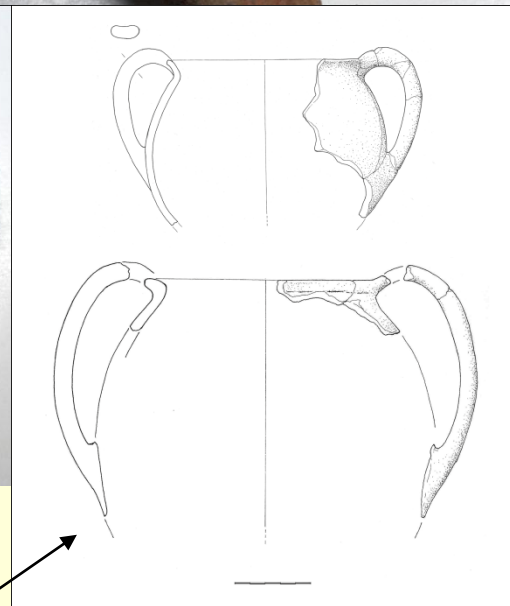
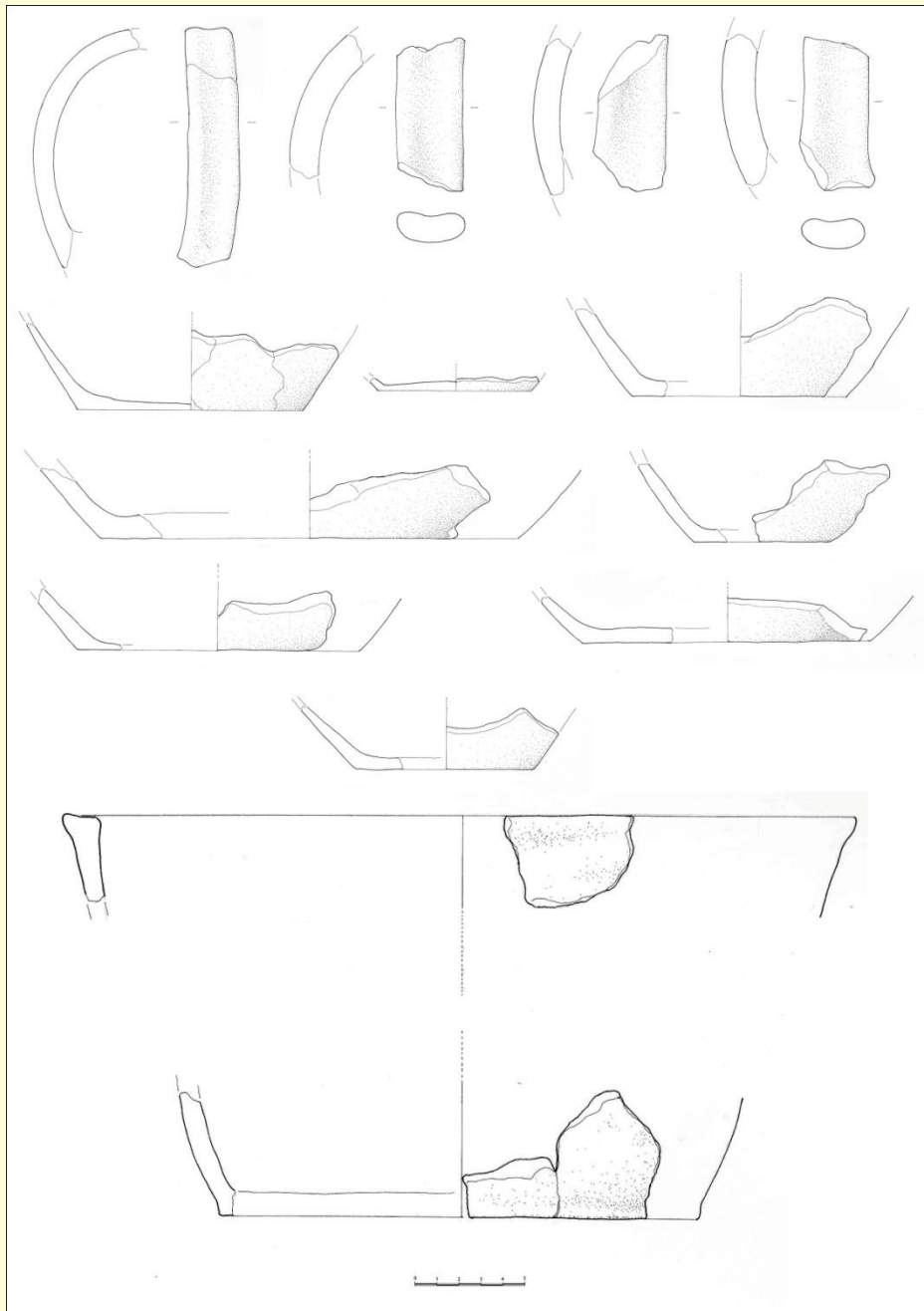


- 8 types of jars on VKJ site/  
8 tipi di olle a VKJ

- Jar/olla 2 I-IV
- Jar/olla 3 II-IV
- Jar/olla 4 II-IV
- Fabric/impasto VKJ 2

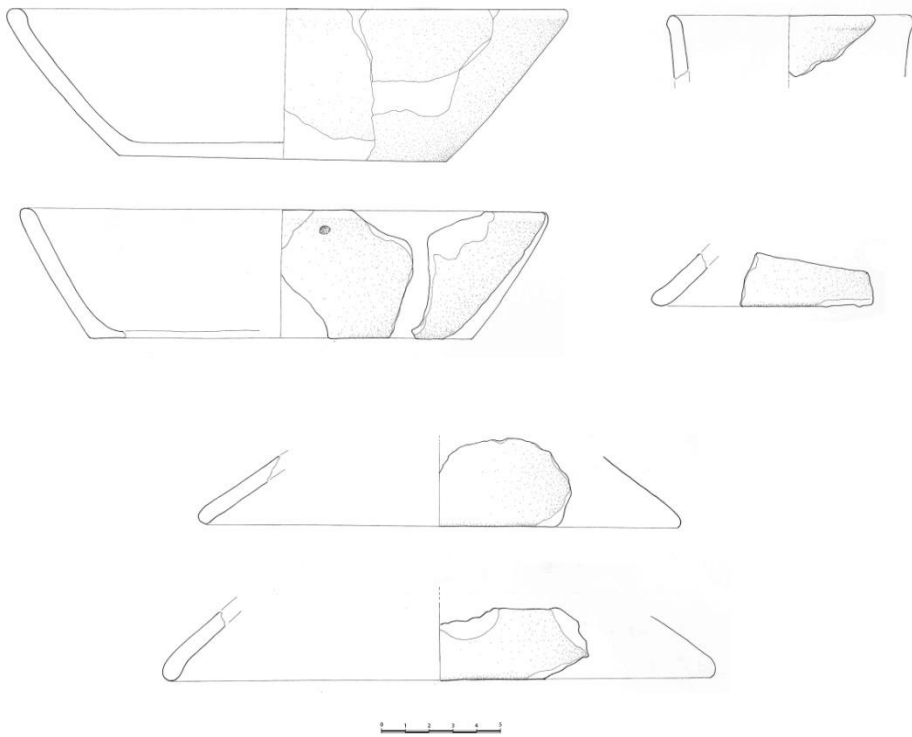






- Jar/olla 5
- III-IV century/secolo, fabric/impasto VKJ 2





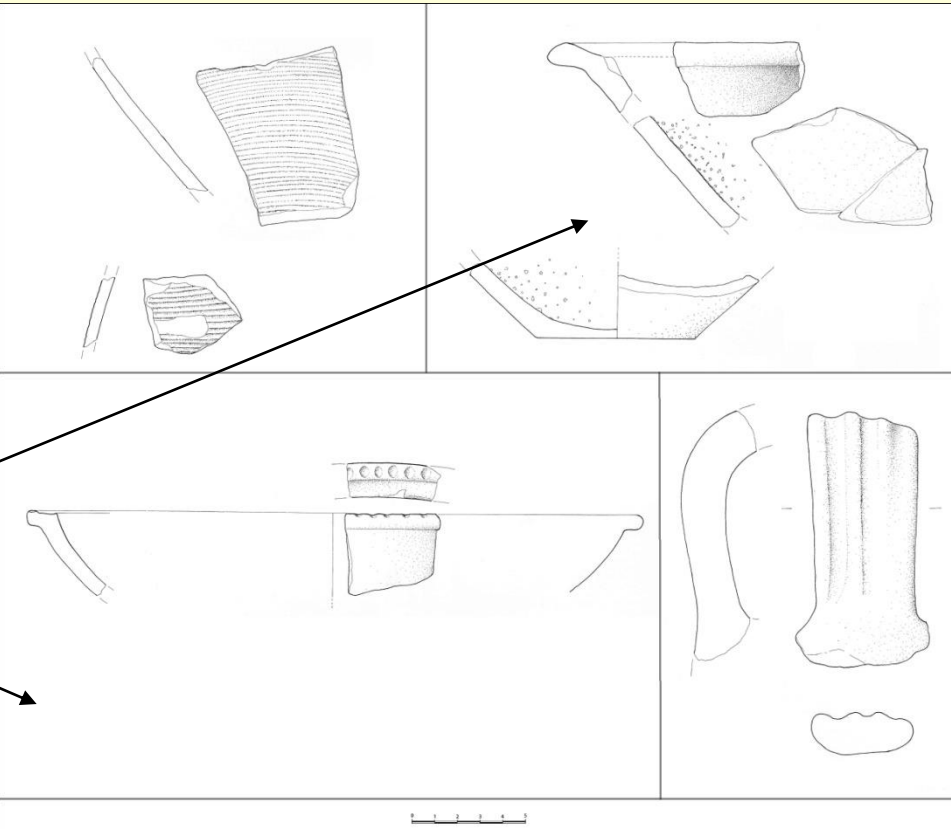
- Plates and lids – fabric VKJ 2
- Plates with slip on inner side
- Simple and practical forms
  
- Piatti e coperchi – impasto VKJ 2
- Piatti con vernice sulla parte interiore
- Forme semplici e funzionali





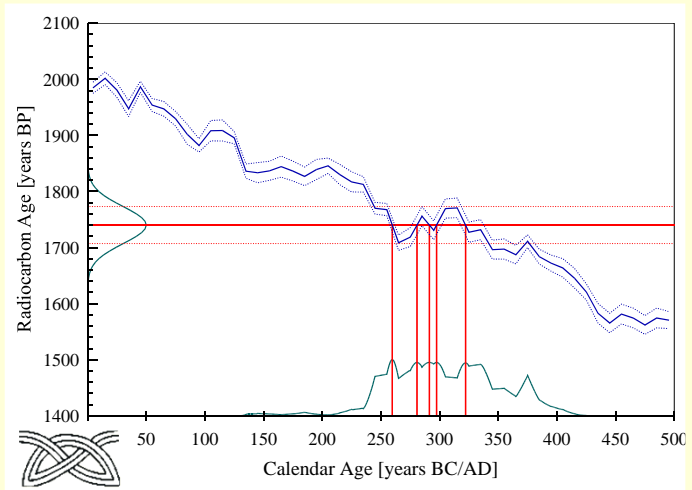


- Gray ware  
Ceramica grigia
- Glazed ware – bowl and mortaria  
Ceramica invetriata – terrina e mortai



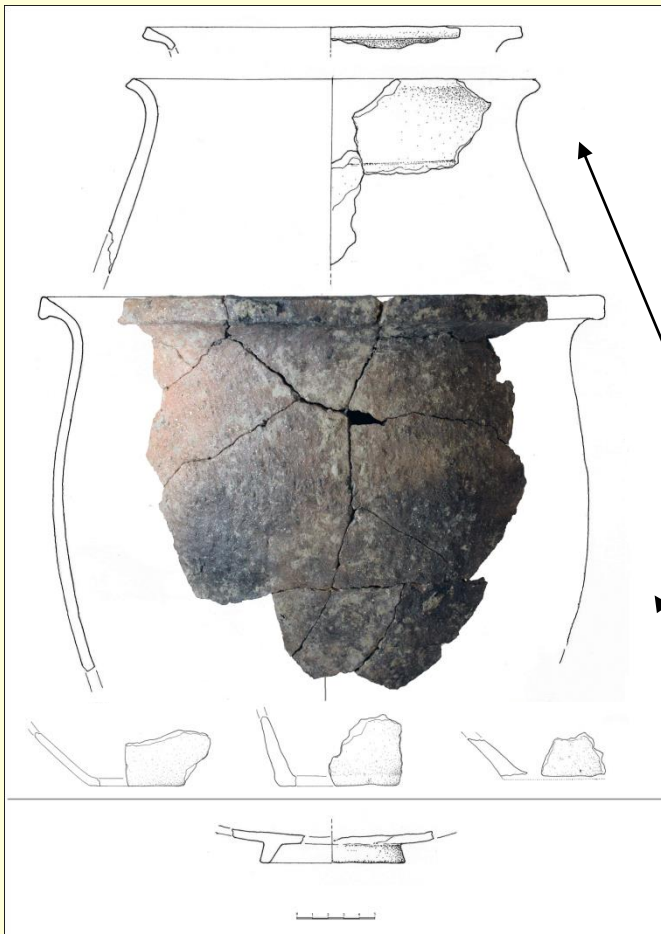


- Pit ?
- Kitchen coarse ware and terra sigillata
- Burned soil and charcoal bellow pottery
- III/IV century
  
- Fossa ?
- Ceramica grezza e terra sigillata
- Sotto la ceramica c'era terra bruciata e carbone
- III/IV secolo



Radiocarbon Age: BP  $1740 \pm 33$   
 Calibrated Ages: cal AD 260, 281, 291, 297, 322  
 One Sigma Range: cal AD 245 - 265 (Probability 14.3 %)  
 (Probability 68,3 %) 266 - 312 (Probability 33.5 %)  
 315 - 341 (Probability 19.8 %)  
 374 - 376 (Probability 0.7 %)  
 Two Sigma Range: cal AD 231 - 402 (Probability 95.4 %)





- Kitchen coarse ware made without wheel with big inclusions of quartz and mica  
Ceramica grezza prodotta senza tornio, con inclusioni grandi di quarzo e mica
- Jar/olla 8                    III-V
- Jar/olla 6                    III-IV



- Terra sigillata – base with foot / fondo con piede





- 1st half of V century
- Pithouse or working area with axes, nails, knives, small bronze bell, Crossbow brooch fragment (knob), ceramic weights, cereals, glazed and coarse ware

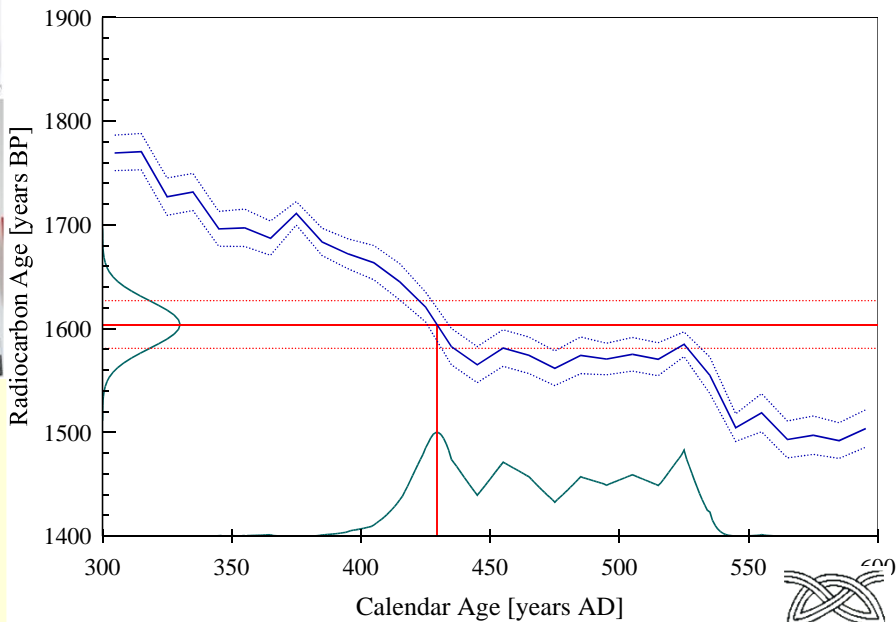
- Prima metà del V sec.
- Capanna o zona di lavoro con asce, chiodi, coltelli, campana in bronzo, frammento (cipolla) di Crossbow spilla, pesi in argilla, cereali, ceramica invetriata e grezza



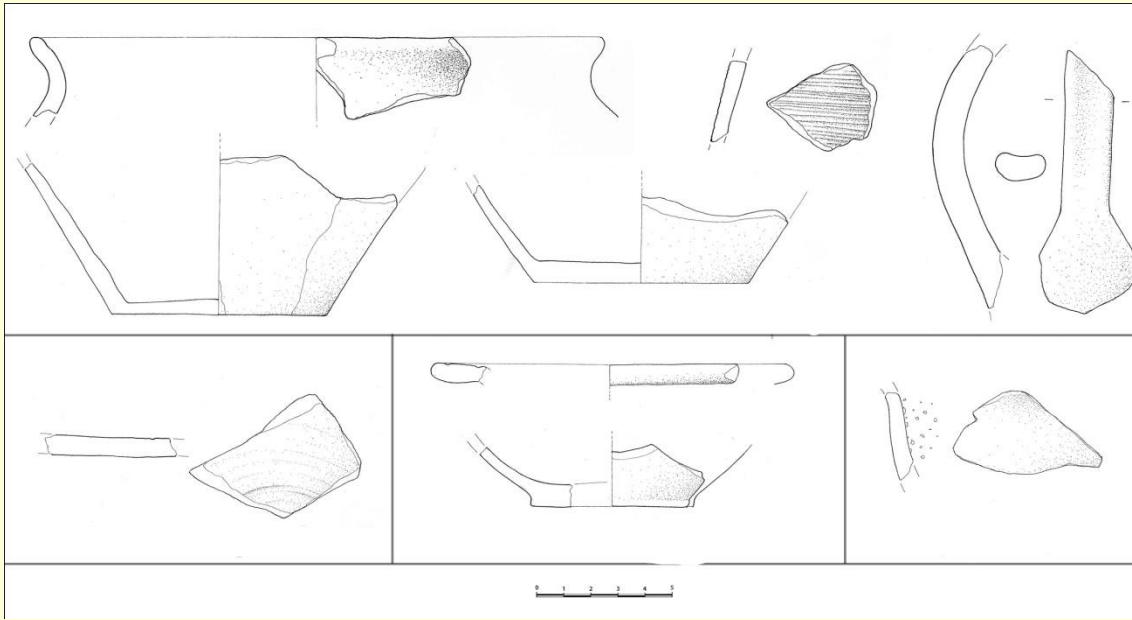
Calibrated Age:  
One Sigma Range:  
(Probability 68,3 %)

cal AD 429  
cal AD 419 - 441 (Probability 24.6 %)  
449 - 467 (Probability 14.3 %)  
483 - 492 (Probability 6.8 %)  
498 - 512 (Probability 10.9 %)  
516 - 529 (Probability 11.6 %)  
cal AD 412 - 534 (Probability 95.4 %)

Two Sigma Range:







- Kitchen coarse ware (fabric VKJ 2→II-V century)
- Fineware
- Glazed ware: small bowls and mortaria
- Ceramica grezza (impasti VKJ→II-V sec.)
- Ceramica depurata
- Ceramica invetriata: piccole ciottole e mortai







Thank you for your attention  
Grazie per la vostra attenzione

