

# The database of antique archaeological sites of the Republic of Croatia

---

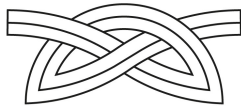
**Ožanić Roguljić, Ivana; Turkalj, Kristina; Jelinčić Vučković, Kristina**

**Conference presentation / Izlaganje na skupu**

*Permanent link / Trajna poveznica:* <https://urn.nsk.hr/urn:nbn:hr:291:140955>

*Rights / Prava:* [Attribution 4.0 International](#)/[Imenovanje 4.0 međunarodna](#)

*Download date / Datum preuzimanja:* **2025-03-03**



INSTITUT ZA  
ARHEOLOGIJU

*Repository / Repozitorij:*

[RIARH - Repository of the Institute of archaeology](#)

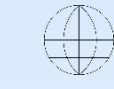


# The database of antique archaeological sites of the Republic of Croatia

Ivana Ožanić Roguljić, Kristina Turkalj, Kristina Jelinčić Vučković

[iozanic@iarh.hr](mailto:iozanic@iarh.hr), [kristina.turkalj@iarh.hr](mailto:kristina.turkalj@iarh.hr), [kristina.jelincic@iarh.hr](mailto:kristina.jelincic@iarh.hr)

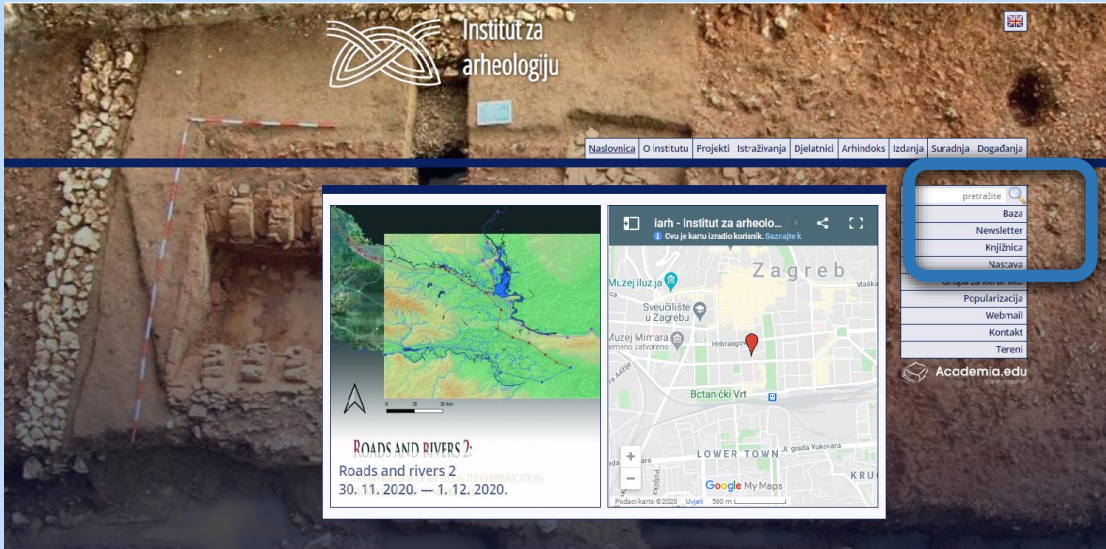
Institut za arheologiju, Gajeva 32, 10000 Zagreb, Croatia



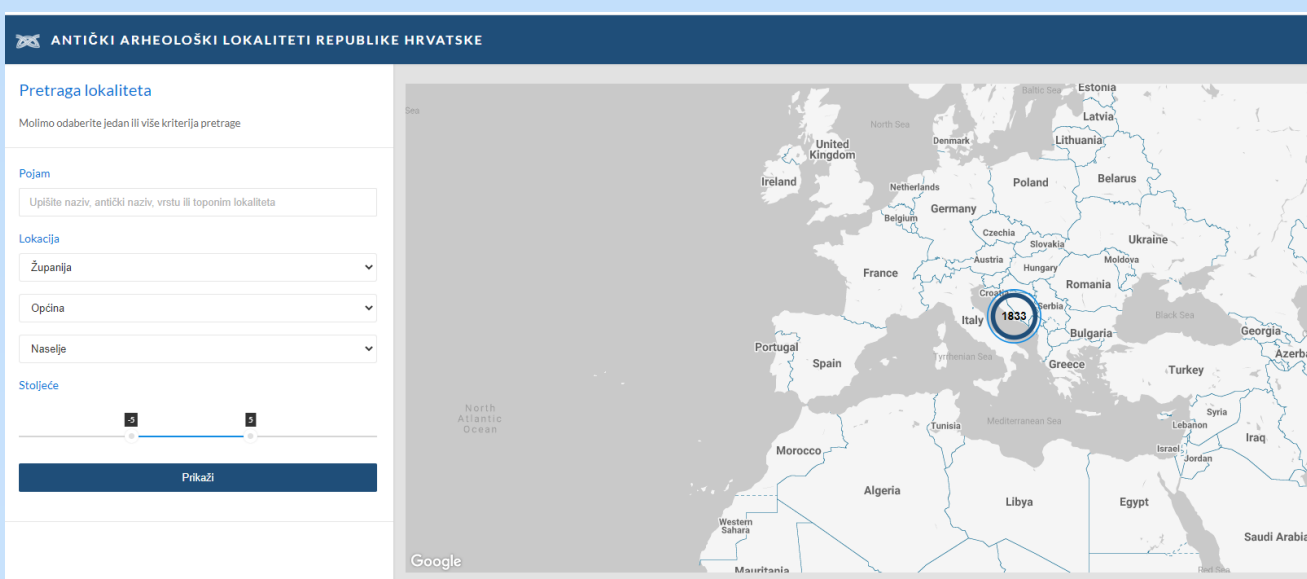
[www.baza.hr](http://www.baza.hr)



Baza antičkih arheoloških lokaliteta Republike Hrvatske



Link to the DATABASE ([www.iarh.hr](http://www.iarh.hr))



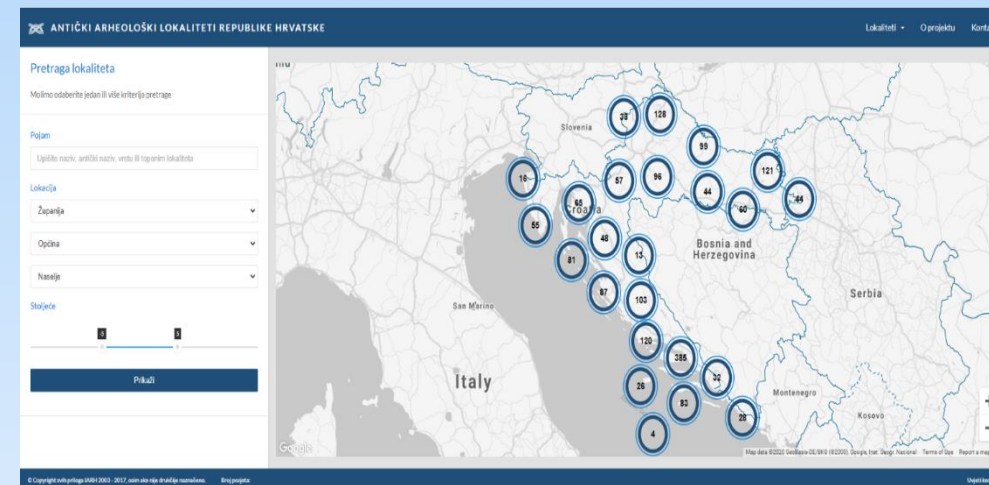
The project "The database of antique archaeological sites of the Republic of Croatia" is outgoing project of the Institute of Archeology. The Database (BAZA) uses as its foundation the wealth of Croatian archeological sites. It was created in order to structure the data collected during the work of the Institute. The DATABASE could be find on the web site of the Institute of Archeology. Currently 1833 sites are registered.

The aim of the project is creating a database of Greek and Roman archaeological sites as the foundation for science, culture, preservation of Croatian heritage, as well as the presentation of cultural tourism. Creating a database of archaeological sites seemed to be the best opportunity to familiarize the public with the results of the research, the historical importance of the area, its heritage and to draw attention at the long-abandoned and forgotten sites.

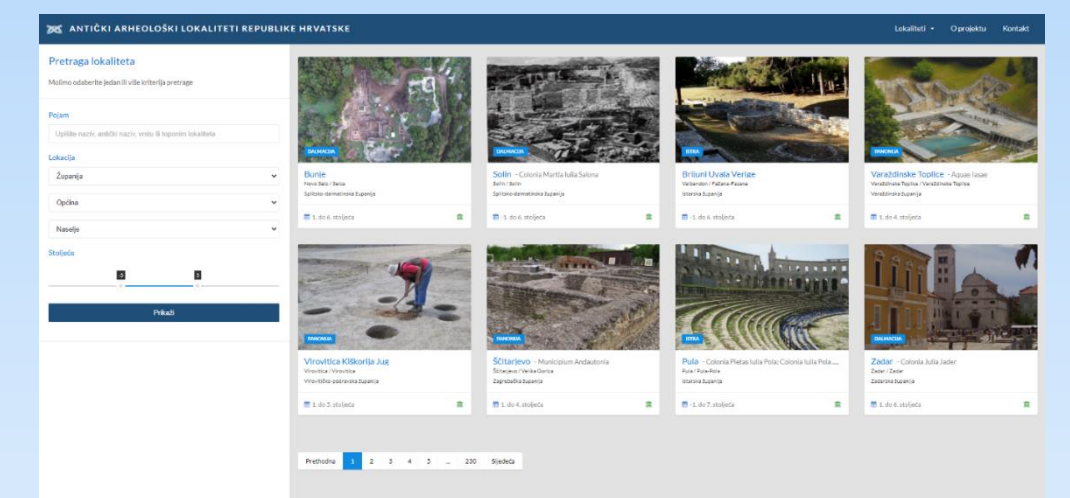
As a source of data, the available literature is used together with knowledge gathered from the Institute's scientific activities and data stored in the archives of the Institute of Archeology (report from field investigation and surveys, photographic archive, manuscripts..). An important factor is network of collaborators: colleague curators and conservators who help with problematic locations or descriptions of sites.

The goal of the DATABASE is creating a tool that provide easier access to data needed for future scientific research, heritage management, and the creation of professional and scientific projects that have archeological basis heritage.

In addition, you could find information on archeological sites that are attractive enough to become a tourist destination. Data availability enables business, scientific and private entities from Croatia as well as around the world to access information about the desired cultural archaeological destination.

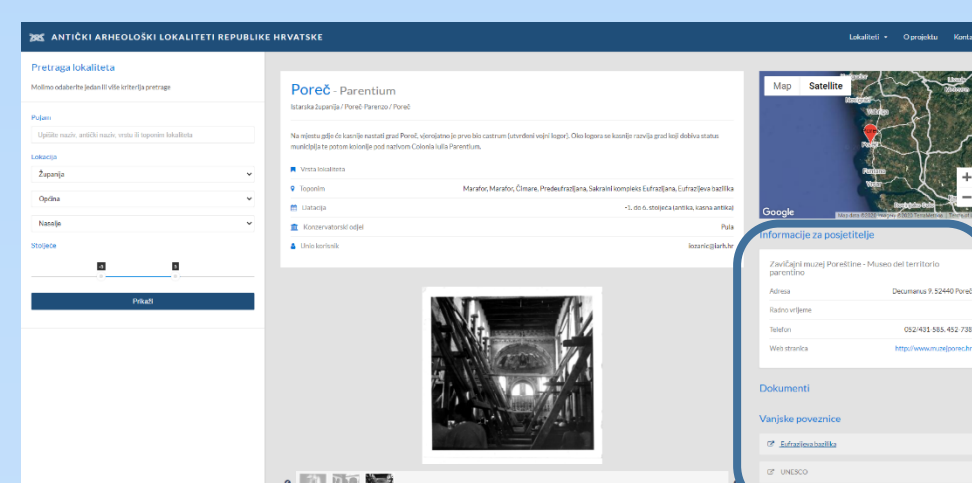
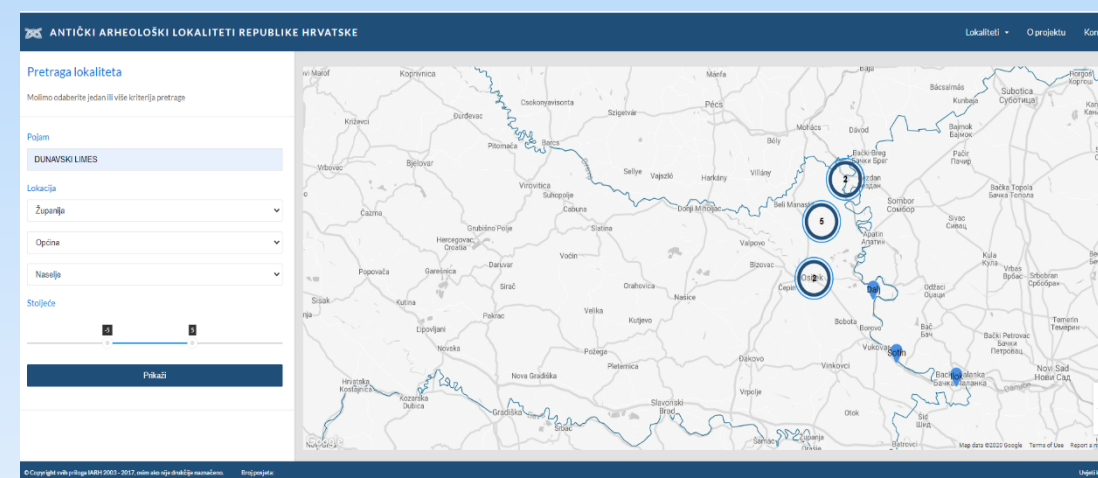


The application itself is based on a cartographic representation of Croatia with the territorial division. Site search is possible in the map view or according to the alphabetical list (the first 30 sites are chosen by the administrator, and the rest are listed alphabetically).

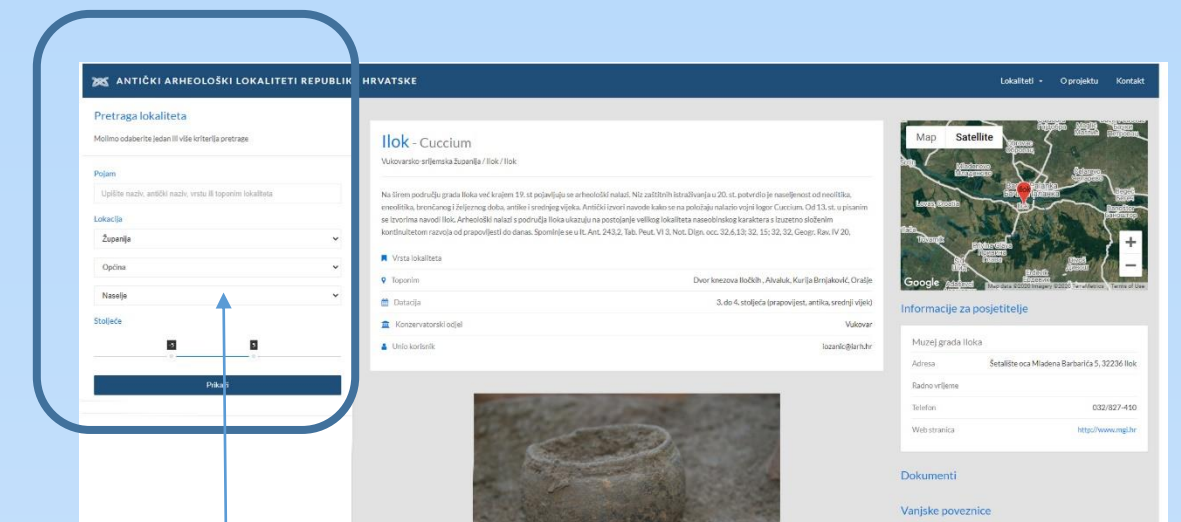
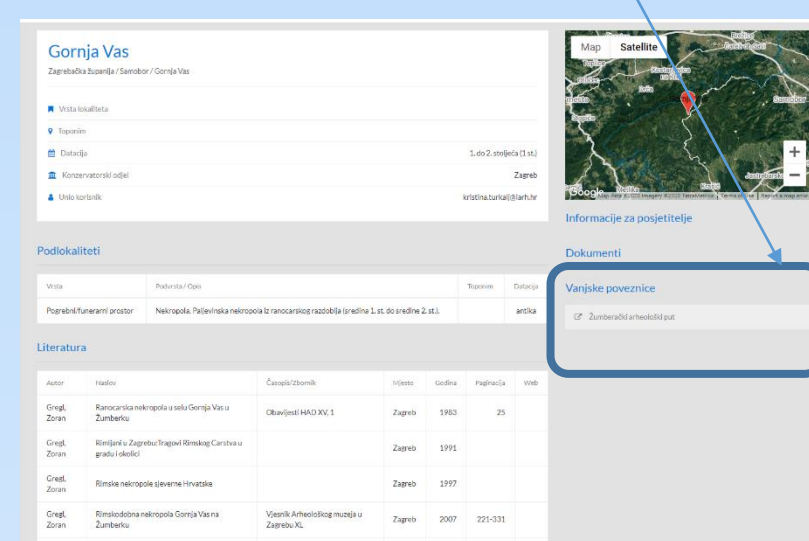


Also is possible to search the archaeological site by entering a specific location, name or term.

For example by entering the term "Limes", a list along the Danube River with the localities that are connected to the Roman border will be displayed



Additional information



Territorial organization

Basic site data

Literature

Each site contains a short description, basic dating, information on which ancient region and province it belongs to, basic literature, the Museum under whose jurisdiction it is, as well as the conservation department (Ministry of Culture and Media) and additional content such as photos, pdf documents.

In the database under a certain site, you can also find links for tourist attractions, such as educational trails (e.g. Žumberak archaeological trail), links to other web sites that are related to specific archeological site (e.g. Museum, UNESCO, Ubi erat lupa...)